

# **WOR-WIC**

---

## **COMMUNITY COLLEGE**

### **EMERGENCY MEDICAL SERVICES**



### **Program Information Packet**



## TABLE OF CONTENTS

INTRODUCTION .....	4
INTERESTED IN BECOMING AN EMERGENCY MEDICAL TECHNICIAN?.....	4
CONTACT INFORMATION .....	4
EMERGENCY MEDICAL SERVICES FACULTY AND STAFF .....	4
ACCREDITATION .....	5
COSTS.....	5
HEALTH PROFESSIONS DIVISION MISSION STATEMENT AND VALUES .....	6
EMS PROGRAM MISSION STATEMENT .....	6
EMS PROGRAM GOAL .....	7
EMS PROGRAM DESCRIPTION .....	7
CREDIT FOR EXPERIENTIAL LEARNING .....	8
ADVANCED PLACEMENT POLICY .....	8
TRANSFER STUDENTS .....	21
PROGRAM PLACEMENT FLOW CHART .....	10
GENERAL REQUIREMENTS .....	12
EMS APPLICATION REQUIREMENTS.....	13
ASSOCIATE DEGREE IN EMERGENCY MEDICAL SERVICES .....	14
EMS SELECTION PROCESS .....	14
PROGRAM REQUIREMENTS.....	15
PARAMEDIC FUNCTIONAL JOB ANALYSIS & TECHNICAL STANDARDS .....	15
OCCUPATIONAL RISKS .....	17
PARAMEDIC CERTIFICATE .....	18
ASSOCIATE OF APPLIED SCIENCE DEGREE .....	19
CLINICAL AND FIELDWORK SITES .....	20
HEALTH PROFESSIONS FORGIVENESS POLICY .....	20
HEALTHCARE PACKET AND IMMUNIZATIONS .....	21
EMS ARTICULATION AGREEMENT.....	21
WWCC DISCRIMINATION AND COMPLAINTS POLICY .....	21

## INTRODUCTION

Thank you for your interest in the Emergency Medical Services Program offered by Wor-Wic Community College.

**Please Read This Entire Booklet. It Is Your Responsibility to Make Sure You Have Completed All Steps of The Admission Process by Stated Deadlines.**

## INTERESTED IN BECOMING AN EMERGENCY MEDICAL TECHNICIAN?

Applicants to the E.M.S. program must meet the Functional Job Analysis for E.M.T.'s set by the National Highway Traffic Safety Administration. This document can be found on the E.M.S. department website under the Program Information tab (<https://www.worwic.edu/Programs-Courses/Credit-Programs/Emergency-Medical-Services/>). Additionally, students must complete an admissions application to the college, take the diagnostic exams, and enroll in EMS 101 and EMS 151 during the fall and/or spring semester. To become a nationally certified E.M.T. (NREMT), students must pass the written National Registry Cognitive Examination for E.M.T. and pass the psychomotor examination administered by the Maryland Institute for Emergency Medical Services Systems (MIEMSS). To obtain Maryland certification and be eligible to work in Maryland as an E.M.T., students must possess a NREMT certification and be affiliated with a Maryland fire or E.M.S. *Affiliation requirements are not pre-requisites for the EMS 101 or EMS 151 courses or National Registry Certification. They only apply to Maryland certification. Students wishing to enroll in EMS 101 or 151 are NOT required to complete the attached application packet.*

## CONTACT INFORMATION

If you have any questions, please contact us at the following:

### **Admissions**

Wor-Wic Community College  
32000 Campus Drive  
Salisbury, MD 21804  
410-334-2895

### **Emergency Medical Services Dept**

Wor-Wic Community College  
32000 Campus Drive; SH 307  
Salisbury, MD 21804  
410-572-8740

## EMERGENCY MEDICAL SERVICES FACULTY AND STAFF

Daniel Webster, BS, NRP  
Department Head & Assistant Professor  
410-572-8738  
dwebster@worwic.edu

Chuck Barton, BS, NRP  
Clinical Coordinator & Assistant Professor  
410-572-8739  
cbarton@worwic.edu

Administrative Associate  
Health Professions  
410-572-8740

## ACCREDITATION

Wor-Wic is a state-approved two-year college. It is accredited by the Commission on Higher Education of the Middle States Association of Colleges and Schools, 3624 Market St., Philadelphia, PA 19104, (267) 284-5000. The Commission on Higher Education is an institutional accrediting agency recognized by the U.S. Secretary of Education and the Commission on Recognition of Post-secondary Accreditation.

*The Wor-Wic Community College paramedic program is accredited by the Commission on Accreditation of Allied Health Education Programs ([www.caahep.org](http://www.caahep.org)) upon the recommendation of the Committee on Accreditation of Educational Programs for the Emergency Medical Services Professions (CoAEMSP).*

*Commission on Accreditation of Allied Health Education Programs  
727-210-2350  
[www.caahep.org](http://www.caahep.org)*

*To contact CoAEMSP:  
214-703-8445  
[www.coaemsp.org](http://www.coaemsp.org)*

*The Emergency Medical Services Board and the Maryland Institute for Emergency Medical Services Systems (MIEMSS) has approved the emergency medical services program at Wor-Wic Community College as a paramedic education program.*

*To contact MIEMSS:  
800-762-7157  
[www.miemss.org](http://www.miemss.org).*

## COSTS

Prospective emergency medical services students should refer to the college website for current tuition rates. In addition to tuition, other semester costs include registration fees, books, laboratory fees, uniforms, and insurance. Financial Aid, scholarships, and grants are available to assist with the program's costs. For additional information, contact the Financial Aid Office at (410) 334-2905, email: [financialaid@worwic.edu](mailto:financialaid@worwic.edu) explore the financial aid web page at <https://www.worwic.edu/Pay-For-College/Paying-for-Credit-Programs/Financial-Aid-Scholarships>, or consult the college catalog.

## HEALTH PROFESSIONS DIVISION

### Mission Statement

The Health Professions division advocates for and ensures adherence to the professional standards, facilitates faculty development, and coordinates resourcing for the health programs involved to promote student success in entering the local community workforce as well-prepared healthcare professionals.

### Values

**Professionalism** – Health profession students accept constructive feedback, self-evaluate personal performance, and practice safety in the clinical practicum according to professional standards. Professionalism is practiced by demonstrating respect for students, faculty, staff, and patients.

**Community** – Health profession students practice civility, are advocates for patients and peers, and promote health through community service.

**Integrity** – Health profession students exhibit honest and ethical behavior, assume responsibility for actions and are accountable for academic performance.

**Compassion** – Health profession students deliver compassionate care to patients, are empathetic and understanding of patient needs, and serve as ambassadors for the health programs in clinical agencies.

**Cultural Competence** – Health profession students are respectful of diverse opinions, open-minded to new ideas, provide unbiased patient care, promote the values of diversity, equity, inclusion, and belongingness when interacting with students, faculty, and patients.

**Scholarship** – Health profession students engage in life-long learning opportunities to develop technical skill and clinical judgment competencies necessary to serve as future leaders in the health care industry.

**Excellence** – Health profession students adhere to the highest standards of performance, model professionalism, and engage in collaborative learning experiences to advance the health professions division.

## EMS PROGRAM MISSION STATEMENT

The paramedic program at Wor-Wic Community College provides students with a comprehensive didactic, laboratory, clinical and field education that prepares graduates with the technical expertise for employment in the emergency medical services profession. Graduates from the paramedic program will exhibit the professional and personal attributes contributing to the delivery of pre-hospital care to patients in our community. The program supports the college's vision by developing an exceptional emergency medical services workforce through excellence in education.

## EMS PROGRAM GOAL

The primary goal for the E.M.S. program is to prepare Paramedics who are competent in the cognitive (knowledge), psychomotor (skills), and affective (behavior) learning domains to enter the profession.

## EMS PROGRAM DESCRIPTION

Wor-Wic programs in emergency medical services (E.M.S.) are designed to provide students with the knowledge and competencies required to administer emergency pre-hospital care. These programs follow national and state standards that allow graduates to take national and state certification examinations.

Once officially accepted, students are admitted to the E.M.S. program. Admission into the E.M.S. program is restricted, and due to the limitations of health care facilities for clinical and field rotations, the selection is on a competitive basis. All admissions documentation (original, no faxed or scanned documents) for the Emergency Medical Services Program must be completed and submitted to the E.M.S. office by 4 pm on the last Friday in June. Candidates are selected using a point scale based on their submitted enrollment packet, diagnostic testing, and courses completed.

If you hold a current emergency medical technician (basic) certification, the Emergency Medical Services certificate (N.R.P.) option prepares graduates to sit for national and state testing to be licensed as Paramedics (N.R.P.).

Students obtain clinical experiences at institutions such as Tidal Health Peninsula Regional in Salisbury, Atlantic General Hospital in Berlin, and Tidal Health McCready Pavilion in Crisfield. Clinical experiences are generally scheduled Monday through Friday; however, scheduled clinical hours may occur during the day, evening, and weekends according to patient volume and as determined by each clinical site.

After you successfully complete the EMT-P program, you are eligible to take a certification and licensure examination in emergency medical services. Once a student has passed all required examinations, you will be licensed to work as a Paramedic (N.R.P.).



## CREDIT FOR EXPERIENTIAL LEARNING

If already certified as an E.M.S. provider, Wor-Wic Community will grant you college credits for previous E.M.S. experience. The college grants credit for emergency medical technician, cardiac rescue technician (or Intermediate/99 equivalent), and for paramedic. For credit to be awarded, a student must complete and submit the *Request for College Credit for Emergency Medical Services Experience* form with copies of applicable certifications to the E.M.S. department office. Credit will be awarded upon completion of one three (3) credit class at the college. Completing additional general education courses are required to earn an Associates of Applied Science (A.A.S.) degree in emergency medical services. Students must successfully complete all the graduation requirements and associate degree requirements detailed in Wor-Wic Community College's current catalog.

Students who are paramedic licensed and requesting college credit for emergency medical services courses and who have taken the college's proficiency examinations for the courses forfeit the proficiency examination credits in exchange for college credit earned for the paramedic licensure.

## ADVANCED PLACEMENT POLICY

Once accepted into the program, a current Maryland licensed Emergency Medical Technician (E.M.T.) will be granted credit for EMS 101 & 151. Applicants will follow the procedure outlined by the Credit for Experiential Learning Policy above. Once completed, the applicant will earn credit for the following skills:

- NPA/OPA insertion
- Oral suctioning techniques
- FBAO infant and adult
- Oxygen administration via nasal cannula and face mask
- B.V.M. ventilation of the adult, pediatric and neonatal patient
- Bleeding control, including tourniquets
- Application of a cervical collar and performing spinal motion restriction
- Lifting and moving patients to the stretcher
- Application of splints to a patient with a suspected long bone or joint injury
- Impaled object stabilization
- Dressing and bandage application to a patient with a soft tissue injury
- Application of an occlusive dressing to an open wound of the thorax
- Uncomplicated delivery
- Vital sign assessment
- Comprehensive physical assessment
- Perform C.P.R. on the adult, pediatric, and neonate

Once accepted into the program, a current Maryland licensed cardiac rescue technician (C.R.T.) is granted credit for EMS 155, 200, 207, 208, 212, 213, and 261. Applicants will follow the procedure outlined by the Credit of Experiential Learning policy. Once completed, the applicant will earn credit for the following skills:

- IV access
- IV infusion medication
- IV bolus medication
- I.M. injection
- I.O. access
- PPV with a B.V.M.
- Oral endotracheal intubation
- Endotracheal suctioning
- FBAO removal using McGill forceps
- Cricothyrotomy
- Supraglottic airway
- Needle decompression of the chest
- Synchronized cardioversion, transcutaneous pacing, and defibrillation
- Chest compression performance

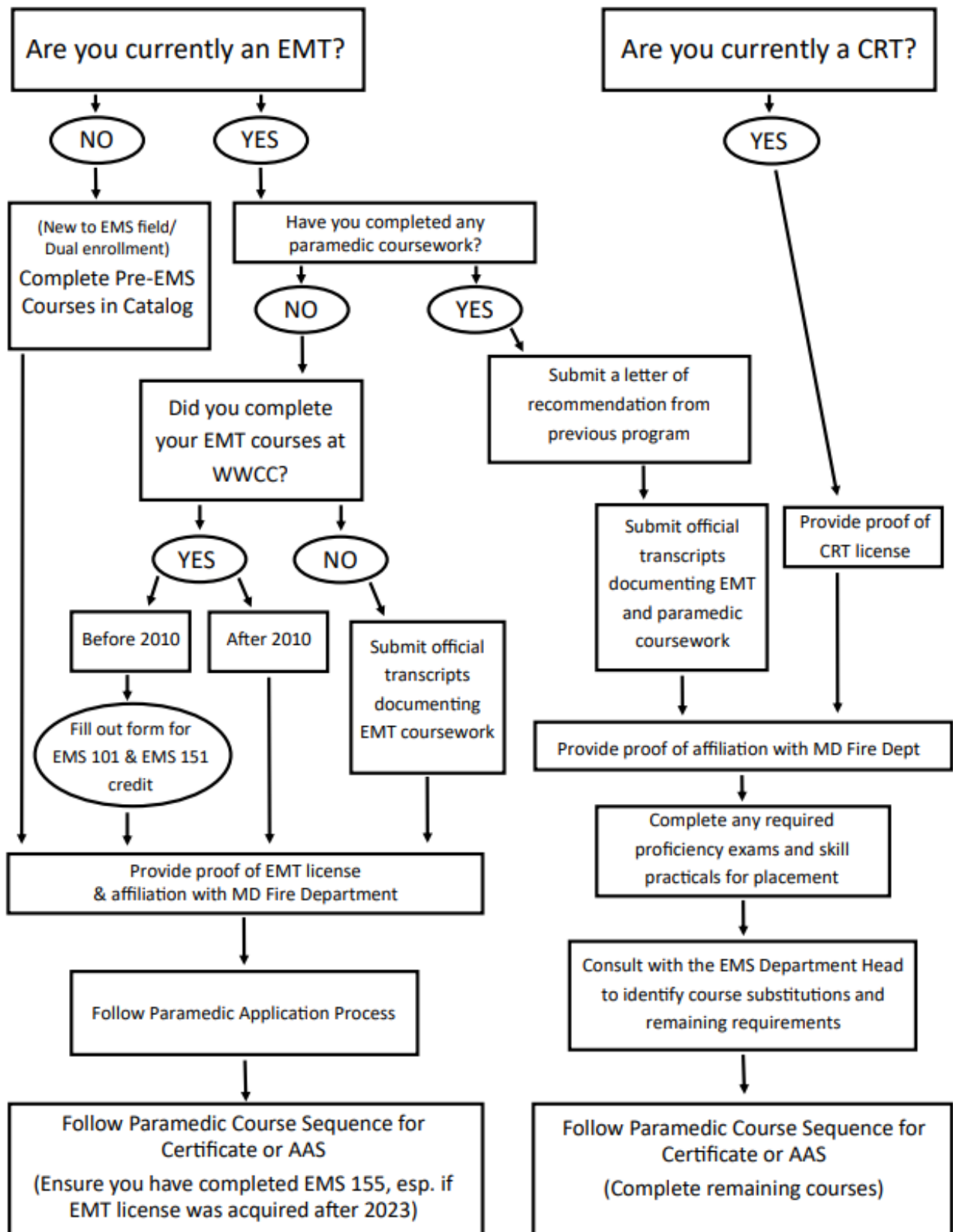
Although an applicant is awarded credit for the above skills for E.M.T. and C.R.T., it does not excuse the applicant from any additional formative assessments required by the program or deemed necessary by the program director, program faculty, or the medical director.

A licensed health care provider, i.e., registered nurse, licensed practical nurse, physician, physician assistant, may apply for advanced placement in the paramedic program. The program will adhere to MIEMSS program outline of the licensed health care provider to paramedic program. All candidates will possess a valid AHA BLS certification, ACLS certification, PALS certification, and Maryland E.M.T. licensure or NREMT certification. In some situations, a skills proficiency examination will be conducted to determine competency and entry point into the program. With input from the medical director, the program director will draft a course outline for the applicant. In lieu of this policy, an applicant who is a licensed health care provider may elect to enroll in the paramedic program in its entirety and will abide by the admissions policy of the program.

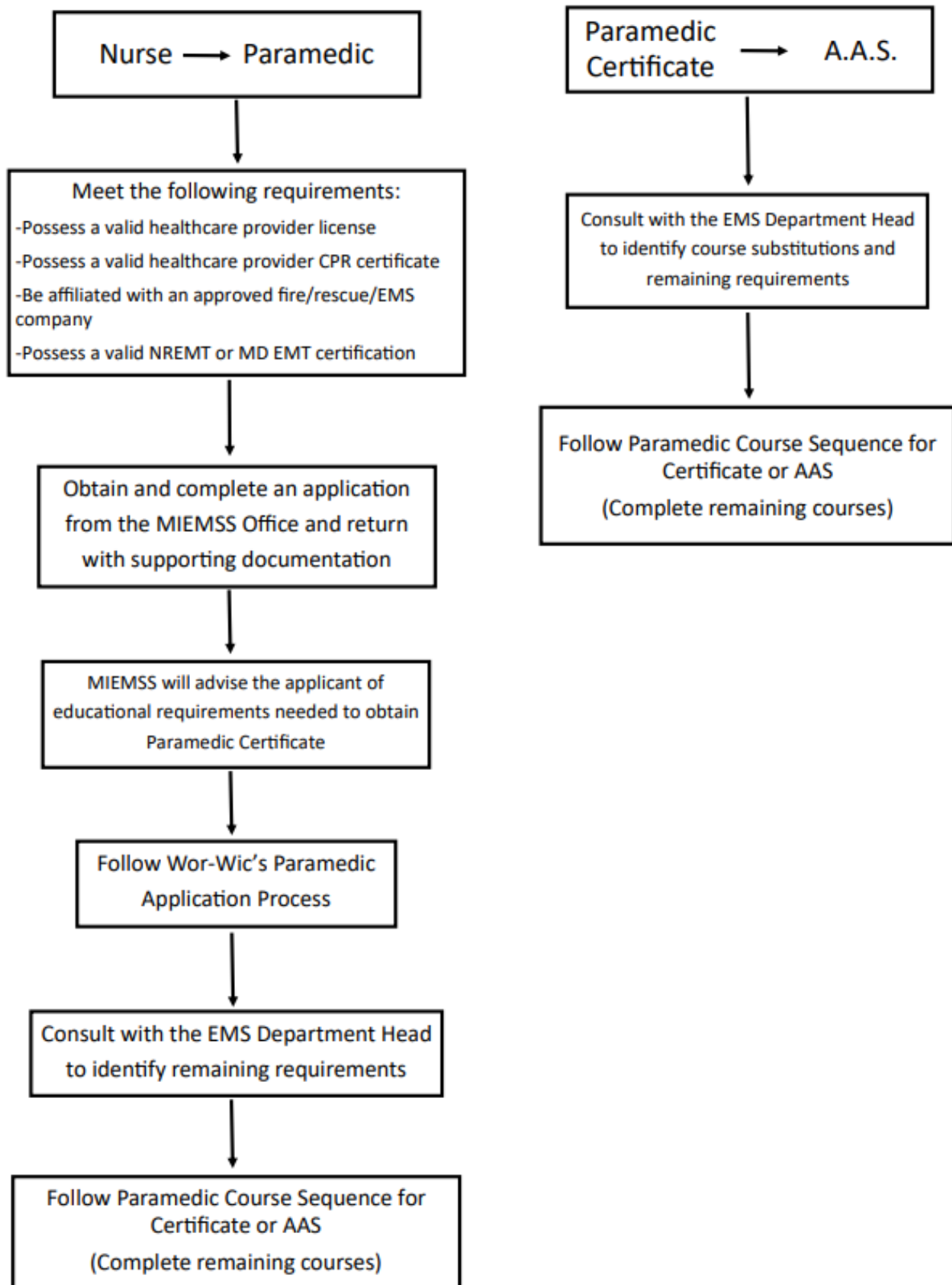
## **TRANSFER STUDENTS**

The emergency medical services program at Wor-Wic Community College evaluates the acceptance of E.M.S. course credits earned from accredited E.M.S. programs. For transfer credit consideration, students must complete a proficiency examination with a minimum grade of 75% for all course transfers. Students shall submit a letter of recommendation from the E.M.S. program of the transferring institution. Upon completion of the above requirements, the Department Head will determine, with the consultation of program faculty, medical director and Dean of Health Professions, which courses are granted transfer credit. If granted admission as a transfer student, the student must complete all applicable skills of the program regardless of successful completion at the transferring program.

## PROGRAM PLACEMENT FLOW CHART



## PROGRAM PLACEMENT FLOW CHART



## GENERAL REQUIREMENTS

1. Complete the electronic College Admission Application.  
[Apply to Wor-Wic > Wor-Wic Community College \(worwic.edu\)](http://worwic.edu)
2. If applicable, submit an official high school and/or college transcript to student services to transfer college credits into Wor-Wic. You can submit your application when you are a high school senior; however, students must be 18 years of age prior to entering clinical sites.

International students who want to be admitted as high school graduates or who want to transfer college credits into Wor-Wic must have their high school and college transcripts evaluated by acceptable academic credential evaluation services at their own expense. The registrar maintains a list of acceptable academic credential evaluation services.

3. Take our diagnostic assessments (except candidates who have a bachelor's or higher degree, college transfer students who are eligible for transfer credit for ENG 101 and/or MTH 103, or a higher-level mathematics course, or who have received Scholastic Aptitude Test (S.A.T.) subset scores of at least 550 or American College Testing (A.C.T.) subset scores of at least 21 within the past two years).
  - a. If the assessment indicates you need "College Reading" (ENG 095) and/or "Introduction to Computation" (MTH 091), you must complete those courses with a grade of "C" or better.
  - b. All developmental courses (courses below the 100 level as described above) must be completed and passed with a grade of "C" or better by the last Friday in June of the year in which you are applying to the program.

## EMS APPLICATION REQUIREMENTS

In order to be considered for admission into the E.M.S. program, candidates must:

1. Complete all General Requirements;
2. Complete and submit an E.M.S. Enrollment Application Packet (included in the EMS Admissions Packet) – original document, no faxed or scanned copies will be accepted;
  - a. Complete an E.M.S. Application, selecting a Day or Evening\*\* class option;
  - b. Complete the Criminal Background Statement;
  - c. Complete an Agency Verification Form; and
  - d. If applicable, complete a Request for College Credit for Emergency Medical Services Experience Form;
3. Complete E.M.S. pre-paramedic courses (or be a Maryland or Nationally certified E.M.T. and show proof of E.M.T. card);
  - a. Pre-Paramedic Courses:

			<u>Credits</u>
EMS	101	Emergency Medical Technician I	4
EMS	151	Emergency Medical Technician II	4
EMS	155	Physiology and Pathophysiology *	3
SDV	100	Fundamentals of College Study	<u>1</u>
			12
  - b. EMS 101 and EMS 151 must each be completed with a "C" or better.
  - c. \*EMS 155 is offered in the spring and fall semesters and can be taken while currently enrolled in the paramedic program.
4. Meet the functional job analysis standards for E.M.T.s, which can be found on the college's website
5. Submit all application documents by **4:00 pm on the last Friday in June.**

**\*\*Evening enrollment is based upon number of applicants**

## ASSOCIATE DEGREE IN EMERGENCY MEDICAL SERVICES

Students who are interested in obtaining an Associate of Applied Science Degree in Emergency Medical Services and who do not currently hold a Paramedic license may complete the E.M.S. associate degree requirements as listed below. All non-EMS courses may be taken prior to being accepted into the E.M.S. program.

1. Students must meet all of Wor-Wic Community College's graduation requirements and requirements of an associate degree; and
2. Take all required pre-requisite courses, be accepted into the E.M.S. program, take all E.M.S. courses and non-EMS courses required for the associate degree at Wor-Wic; or
3. Obtain and show proof of a national or Maryland State E.M.T. license with course work completed at another institution, be accepted into the E.M.S. program, complete all E.M.S. courses and non-EMS courses required for the associate degree at Wor-Wic; or
4. Obtain a cardiac rescue technician license (C.R.T.) with course work completed at another institution, show proof of current C.R.T. license, be accepted into the E.M.S. program, complete all E.M.S. courses under the EMT-P program, and complete all non-EMS courses required for the associate degree.

## EMS SELECTION PROCESS

Due to the limited number of spaces available in the emergency medical services program, satisfactory completion of the admission requirements does not guarantee that you will be admitted into the program since the final selection is on a competitive basis.

Prospective students are ranked using a point scale based on their submitted enrollment packet, diagnostic testing results, and completed courses. Scores are ranked from highest to lowest. In the event of a tie, scores are ranked by lottery. The top 16 students become the prospective students to be accepted in the Emergency Medical Service program. Other ranked students on the list are placed on a waitlist.

Prospective students are notified by email of their acceptance or alternate status by the Emergency Medical Services office and must accept or reject their position in the E.M.S. program by the designated deadline enclosed within the acceptance letter.

**E.M.S. candidates failing to complete any requirements of the application process may be deemed ineligible for consideration.**

## PROGRAM REQUIREMENTS

If you are selected for admission, you must submit an acceptance form by the date that is stated on your acceptance letter. **The Academic Advising Center will then register you for your courses.** You will also be given a deadline to complete (at your own cost) a physical examination, background check, and drug screening; and provide proof of: immunizations (M.M.R., tetanus, varicella, P.P.D.), American Heart Association CPR BLS for health care providers certification, and flu shot. Proof of Hepatitis B shot series or denial is also required. Failure to provide this information may disqualify you from the program.

**Once selected into the program, affiliation with a Maryland E.M.S. operational program must be obtained, and students must hold a Maryland E.M.T. certification prior to clinical rotations. Clinical rotations are held at local sites with educational agreements with the Wor-Wic E.M.S. program.**

## PARAMEDIC FUNCTIONAL JOB ANALYSIS & TECHNICAL STANDARDS

### Paramedic Characteristics

The Paramedic must be a confident leader who can accept the challenge and high degree of responsibility entailed in the position. The Paramedic must have excellent judgement and be able to prioritize decisions and act quickly in the best interest of the patient, must be self-disciplined, able to develop patient rapport, interview hostile patients, maintain safe distance, and recognize and utilize communication unique to diverse multicultural groups and ages within those groups. Must be able to function independently at optimum level in a non-structured environment that is constantly changing.

Even though the Paramedic is generally part of a two-person team generally working with a lower skill and knowledge level Basic EMT, it is the Paramedic who is held responsible for safe and therapeutic administration of drugs including narcotics. Therefore, the Paramedic must not only be knowledgeable about medications but must be able to apply this knowledge in a practical sense. Knowledge and practical application of medications include thoroughly knowing and understanding the general properties of all types of drugs including analgesics, anesthetics, anti-anxiety drugs, sedatives and hypnotics, anti-convulsants, central nervous stimulants, psychotherapeutics which include antidepressants, and other anti-psychotics, anticholinergics, cholinergics, muscle relaxants, anti-dysrhythmics, anti-hypertensives, anticoagulants, diuretics, bronchodilators, ophthalmics, pituitary drugs, gastro-intestinal drugs, hormones, antibiotics, antifungals, antiinflammatories, serums, vaccines, anti-parasitics, and others.

The Paramedic is personally responsible, legally, ethically, and morally for each drug administered, for using correct precautions and techniques, observing and documenting the effects of the drugs administered, keeping one's own pharmacological knowledge base current as to changes and trends in administration and use, keeping abreast of all contraindications to administration of specific drugs to patients based on their constitutional make-up, and using drug reference literature.

The responsibility of the Paramedic includes obtaining a comprehensive drug history from the patient that includes names of drugs, strength, daily usage and dosage. The Paramedic must take into consideration that many factors, in relation to the history given, can affect the type medication to be given. For example, some patients may be taking several medications prescribed by several different doctors and some may lose track of what they have or have not taken. Some may be using nonprescription/over the counter drugs. Awareness of drug reactions and the synergistic effects of

drugs combined with other medicines and in some instances, food, is imperative. The Paramedic must also take into consideration the possible risks of medication administered to a pregnant mother and the fetus, keeping in mind that drugs may cross the placenta.

The Paramedic must be cognizant of the impact of medications on pediatric patients based on size and weight, special concerns related to newborns, geriatric patients and the physiological effects of aging such as the way skin can tear in the geriatric population with relatively little to no pressure. There must be an awareness of the high abuse potential of controlled substances and the potential for addiction, therefore, the Paramedic must be thorough in report writing and able to justify why a particular narcotic was used and why a particular amount was given. The ability to measure and re-measure drip rates for controlled substances/medications is essential. Once medication is stopped or not used, the Paramedic must send back unused portions to proper inventory arena. The Paramedic must be able to apply basic principles of mathematics to the calculation of problems associated with medication dosages, perform conversion problems, differentiate temperature reading between centigrade and Fahrenheit scales, be able to use proper advanced life support equipment and supplies ( i.e. proper size of intravenous needles ) based on patient's age and condition of veins, and be able to locate sites for obtaining blood samples and perform this task, administer medication intravenously, administer medications by gastric tube, administer oral medications, administer rectal medications, and comply with universal pre-cautions and body substance isolation, disposing of contaminated items and equipment properly.

The Paramedic must be able to apply knowledge and skills to assist overdosed patients to overcome trauma through antidotes, and have knowledge of poisons and be able to administer treatment. The Paramedic must be knowledgeable as to the stages drugs/medications go through once they have entered the patient's system and be cognizant that route of administration is critical in relation to patient's needs and the effect that occurs.

The Paramedic must also be capable of providing advanced life support emergency medical services to patients including conducting of and interpreting electrocardiograms (EKGs), electrical interventions to support the cardiac functions, performing advanced endotracheal intubations in airway management and relief of pneumothorax and administering of appropriate intravenous fluids and drugs under direction of off-site designated physician.

The Paramedic is a person who must not only remain calm while working in difficult and stressful circumstances, but must be capable of staying focused while assuming the leadership role inherent in carrying out the functions of the position. Good judgement along with advanced knowledge and technical skills are essential in directing other team members to assist as needed. The Paramedic must be able to provide top quality care, concurrently handle high levels of stress, and be willing to take on the personal responsibility required of the position. This includes not only all legal ramifications for precise documentation, but also the responsibility for using the knowledge and skills acquired in real life-threatening emergency situations.

The Paramedic must be able to deal with adverse and often dangerous situations which include responding to calls in districts known to have high crime and mortality rates. Self-confidence is critical, as is a desire to work with people, solid emotional stability, a tolerance for high stress, and the ability to meet the physical, intellectual, and cognitive requirements demanded by this position.

### **Physical Demands**

Aptitudes required for work of this nature are good physical stamina, endurance, and body condition that would not be adversely affected by frequently having to walk, stand, lift, carry, and balance at times, in excess of 125 pounds. Motor coordination is necessary because over uneven terrain, the patient's, the Paramedic's, and other workers' well-being must not be jeopardized.

## **Comments**

The Paramedic provides the most extensive pre-hospital care and may work for fire departments, private ambulance services, police departments or hospitals. Response times for nature of work are dependent upon nature of call. For example, a Paramedic working for a private ambulance service that transports the elderly from nursing homes to routine medical appointments and check-ups may endure somewhat less stressful circumstances than the Paramedic who works primarily with 911 calls in districts known to have high crime rates. Thus, the particular stresses inherent in the role of the Paramedic can vary, depending on place and type of employment.

However, in general, in the analyst's opinion, the Paramedic must be flexible to meet the demands of the ever-changing emergency scene. When emergencies exist, the situation can be complex and care of the patient must be started immediately. In essence, the Paramedic in the EMS system uses advanced training and equipment to extend emergency physician services to the ambulance. The Paramedic must be able to make accurate independent judgements while following oral directives. The ability to perform duties in a timely manner is essential, as it could mean the difference between life and death for the patient.

Use of the telephone or radio dispatch for coordination of prompt emergency services is required, as is a pager, depending on place of employment. Accurately discerning street names through map reading, and correctly distinguishing house numbers or business addresses are essential to task completion in the most expedient manner. Concisely and accurately describing orally to dispatcher and other concerned staff, one's impression of patient's condition, is critical as the Paramedic works in emergency conditions where there may not be time for deliberation. The Paramedic must also be able to accurately report orally and in writing, all relevant patient data. At times, reporting may require a detailed narrative on extenuating circumstances or conditions that go beyond what is required on a prescribed form. In some instances, the Paramedic must enter data on computer from a laptop in ambulance. Verbal skills and reasoning skills are used extensively.

Source: USDOT 1998 National Standard Paramedic Curriculum

## **OCCUPATIONAL RISKS**

Provision of emergency medical services poses inherent occupational risks for EMS responders.

Risks include the following:

1. Violence/assaults
2. Verbal threats/aggression
3. Motor vehicle crashes
4. Infectious disease
5. Lifting injuries
6. Sprains and strains
7. Psychological trauma
8. Hazardous chemical exposure
9. Hyper/hypothermia

# Emergency Medical Services

## PARAMEDIC CERTIFICATE

<u>Pre-Emergency Medical Services Courses</u>			<u>Credit Hours</u>
◆	SDV 100	Fundamentals of College Study	1
◆	EMS 101	Emergency Medical Technician I	4
◆*	EMS 151	Emergency Medical Technician II	4
◆*	EMS 155	Physiology and Pathophysiology	<u>3</u>
			12

### First Year

#### Fall Semester

*	EMS 200	Pharmacology and Airway Management	3
*	EMS 207	Assessment and Trauma Emergencies I	3
*	EMS 240	Crisis Operations	<u>2</u>
			8

#### Spring Semester

*	EMS 208	Emergency Cardiology	3
*	EMS 241	Trauma Emergencies II	<u>2</u>
			5

#### Summer Semester

*	EMS 212	Medical Emergencies I	3
*	EMS 242	Medical Emergencies II	3
*	EMS 261	EMS Field Experience I	<u>2</u>
			8

### Second Year

#### Fall Semester

*	EMS 213	Special Populations I	3
*	EMS 243	Special Populations II	<u>1</u>
			4

#### Spring Semester

*	EMS 255	Preparation for Paramedic Certification	2
*	EMS 262	EMS Field Experience II	<u>2</u>
			4

**TOTAL CREDIT HOURS      41**

\*This course has a pre-requisite.

◆This course can be taken before being accepted into the program

# Emergency Medical Services

## ASSOCIATE OF APPLIED SCIENCE DEGREE

<u>Pre-Emergency Medical Services Courses</u>			<u>Credit Hours</u>
◆	SDV 100	Fundamentals of College Study	1
□◆	EMS 101	Emergency Medical Technician I	4
◆*	EMS 151	Emergency Medical Technician II	4
□◆*	EMS 155	Physiology and Pathophysiology	<u>3</u>
			12

### First Year

<u>Fall Semester</u>			
*	EMS 200	Pharmacology and Airway Management	3
*	EMS 207	Assessment and Trauma Emergencies I	3
□*	EMS 240	Crisis Operations	2
◆*	ENG 101	Fundamentals of English I	3
◆*	GEN ED	Mathematics Requirement	<u>3-4</u>
			14-15

### Spring Semester

*	EMS 208	Emergency Cardiology	3
□*	EMS 241	Trauma Emergencies II	2
◆*	ENG 151	Fundamentals of English II	3
◆*	GEN ED	Biological/Physical Science Requirement	<u>4</u>
			12

### Summer Semester

*	EMS 212	Medical Emergencies I	3
*	EMS 242	Medical Emergencies II	3
*	EMS 261	EMS Field Experience I	<u>2</u>
			8

### Second Year

<u>Fall Semester</u>			
*	EMS 213	Special Populations I	3
□*	EMS 243	Special Populations II	1
◆	GEN ED	Social/Behavioral Science Requirement	<u>3</u>
			7

### Spring Semester

*	EMS 255	Preparation for Paramedic Certification	2
*	EMS 262	EMS Field Experience II	2
◆*	GEN ED	Social/Behavioral Science Requirement	<u>3</u>
			7

**TOTAL CREDIT HOURS      60-61**

\*This course has a pre-requisite

◆This course can be taken before being accepted into the program.

□ This course has a distance education component.

## CLINICAL AND FIELDWORK SITES

Students are currently obtaining clinical and fieldwork experience at the following sites:

Name of Site	Distance from campus in miles
Anne Arundel County Fire Department	105
Atlantic General Hospital	18
Caroline County Department of Emergency Services	52.9
Delmar Fire Department	9.5
Dorchester County Department of Emergency Services	37.9
Fruitland Volunteer Fire Company	10
Ocean City Fire Department	25.4
Ocean Pines Fire Department	19.8
Princess Anne Volunteer Fire Company	17.8
Salisbury Fire Department	6.4
Snow Hill Volunteer Fire Company	19.8
Talbot County Department of Emergency Services	51.4
TidalHealth Peninsula Regional	6.3

## HEALTH PROFESSIONS FORGIVENESS POLICY

Emergency Medical Services, Nursing, Occupational Therapy Assistant, Physical Therapist Assistant, and Radiologic Technology programs have a competitive admission process, accepting students earning the highest admission points into these limited enrollment programs. Upon admission into a health care program, the student must adhere to departmental policies and procedures and achieve the minimal G.P.A. required to retain continuous enrollment.

The number of attempts to complete these health care programs is limited. Students accepted into Emergency Medical Services, Nursing, Occupational Therapy Assistant, Physical Therapist Assistant, and Radiologic Technology are limited to two enrollments to complete the health care program. Students exiting health care programs for academic, medical, or personal reasons may re-enroll for a second program attempt. Students dismissed due to ethical (violations of academic values and civil conduct as defined in the college catalog) or patient jeopardy infractions are not eligible to seek readmission. Students seeking a second enrollment into a health care program must adhere to the health care department's admission procedures for selection consideration.

Students unsuccessfully completing a health care program upon the second attempt may elect to follow the health professions forgiveness policy. The following outlines the health professions forgiveness policy process:

1. The student must wait two calendar years from the date of withdrawal from the academic program before seeking readmission.
2. The student must meet with the health care program department head to review the admission procedures and develop a re-enrollment success plan.
3. The student must complete the admission process as a new student for the health care program. The readmitted student must take all core health care program courses following admission under the forgiveness policy.
4. The student is limited to a maximum of three attempts in the same health care program. The three attempts include the first admission process and the permitted second re-enrollment. Program failure during the third admission attempt results in permanent dismissal from a limited enrollment health care program.

## HEALTHCARE PACKET AND IMMUNIZATIONS

When a student leaves the program (for any reason), the student's healthcare packet and all immunization records, including flu shots, C.P.R., and P.P.D. results will be destroyed. Neither copies nor originals will be returned to the student or provided to a third party, including clinic sites, employers, or another program at Wor-Wic.

## EMS ARTICULATION AGREEMENT

EMS graduates can seamlessly transfer from the Wor-Wic EMS program to Wilmington University. Students may earn transfer credits at Wilmington University for completion of an Associate of Applied Science (AAS) in Emergency Medical Services at Wor-Wic. EMS graduates may transfer the entire paramedic degree from Wor-Wic Community college into the Bachelor of Science in Health Sciences credit program at Wilmington University. A variety of certificates and accelerated learning options are available to EMS Wor-Wic graduates. For more information about transfer opportunities, EMS students are encouraged to contact the Wor-Wic Registrar's office.

## WOR-WIC COMMUNITY COLLEGE DISCRIMINATION AND COMPLAINTS POLICY

Discrimination and harassment can seriously damage the integrity of an educational institution, destroy the institution's positive work and educational atmosphere and cause psychological and physiological damage to the victims. The college condemns such activity and is strongly committed to promoting a work and academic environment free from discrimination and harassment and to addressing and resolving complaints in a timely fashion.

Wor-Wic Community College does not discriminate on the basis of age, gender, race, color, religion, national origin, marital status, sexual orientation, genetic information, gender identity, disability, income level, limited English proficiency or any other characteristic protected by law in the admission and treatment of students, access to educational programs and activities, and the terms and conditions of employment.

This policy applies to all students, employees, visitors and third-party vendors who are hired by the college. This policy covers any prohibited conduct that occurs on campus or off campus when conducting college business or is circulated at or from the college, during college operating hours or using college equipment, via email, phone, voice mail, text messages, tweets, blog posts, social networking sites or other means.

Questions and complaints should be submitted to Wor-Wic's Title VI and IX coordinators and discrimination investigators.

Student complaints:  
Dr. Kimberly W. Purvis  
Dean of Student Success  
Wor-Wic Community College  
MTC 103D  
32000 Campus Drive  
Salisbury, MD 21804  
410-334-2902  
[kpurvis@worwic.edu](mailto:kpurvis@worwic.edu)

Employee complaints:  
Karen Berkheimer  
Associate Vice President of Human Resources  
Wor-Wic Community College  
BH 106  
32000 Campus Drive  
Salisbury, MD 21804  
410-334-2915  
[kberkheimer@worwic.edu](mailto:kberkheimer@worwic.edu)

*This document is available in alternative formats to individuals with disabilities by contacting disability services at [disabilityservices@worwic.edu](mailto:disabilityservices@worwic.edu), 410-334-2899 or TTY 410-767-6960. Wor-Wic Community College is an equal opportunity educator and employer. Visit [www.worwic.edu/Services-Support/Disability-Services](http://www.worwic.edu/Services-Support/Disability-Services) to learn more.*